

KFC Joint

Kawakin FCD Compact Joint

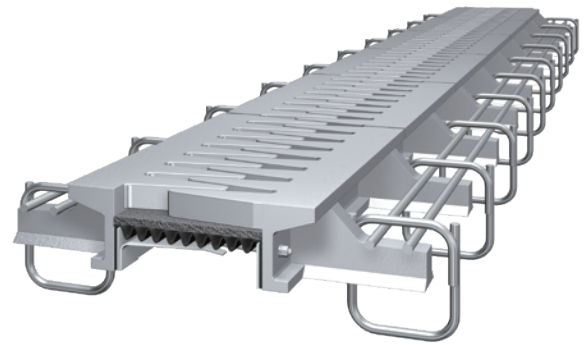


Application range

Suitable for a variety of highway bridges

Function

- Supports vertical loads
- Waterproofing
- Accommodates horizontal movement and rotation



High Durability

The integral structure offers superior fatigue durability. Spheroidal graphite iron (FCD), which is weather-resistant material and has been successfully used over 50 years, is used for the joint.

High Driving Performance, Low Noise

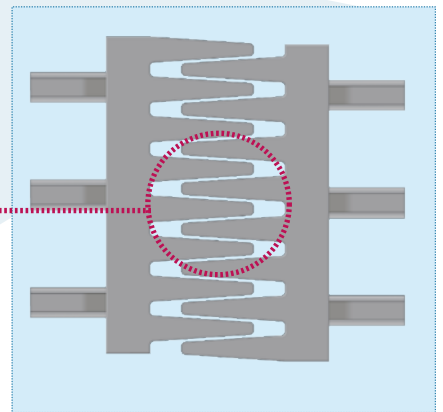
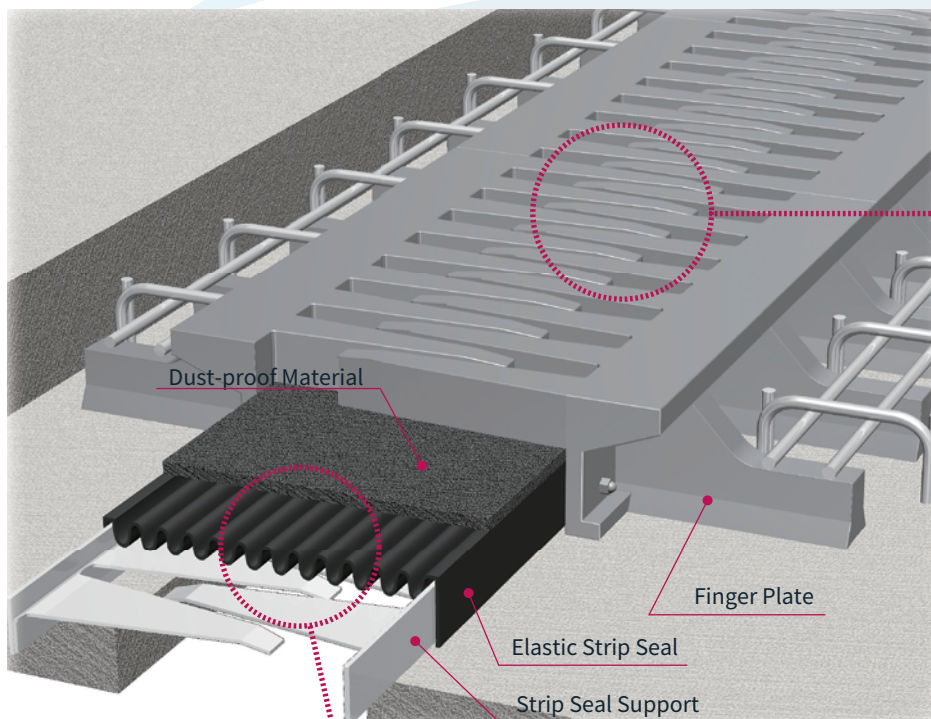
The finger-shaped plates increase driving performance with noise reduction. The laminated structure of a dust-proof material and a newly developed accordion-type elastic strip seal prevents noise transmission through the joint.

Size Line-up

- A broad line-up of KFC joints allowing small to large movements
- Longitudinal movements up to ± 125 mm

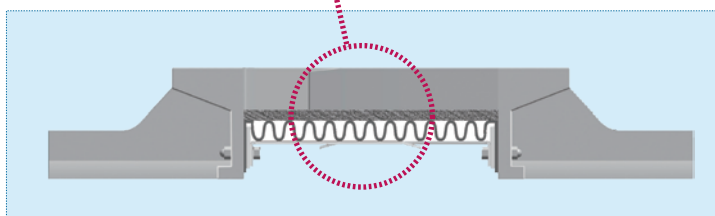
Environmental Friendliness

Cast iron made of eco-friendly recycled materials are used for the product.



Weather resistance

FCD has higher weather resistance than other materials, and longer service life. Aluminium-Magnesium spraying method is applied to the material against corrosion.

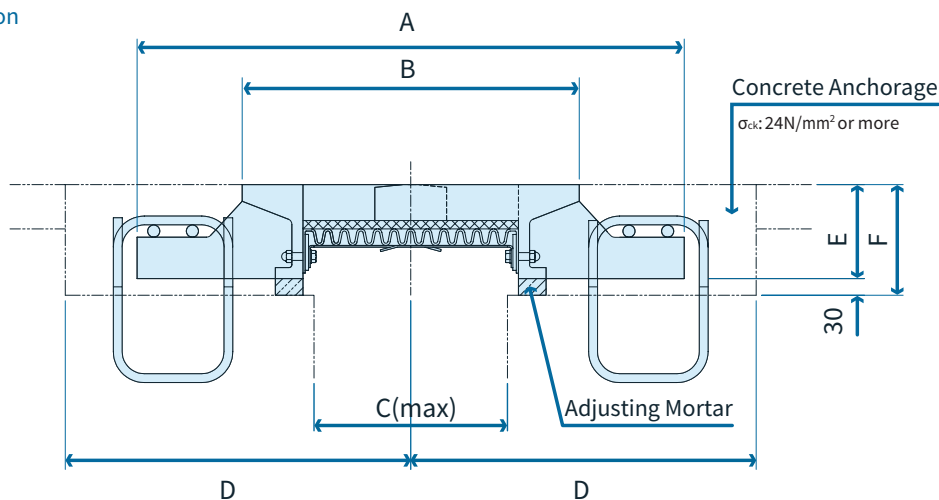


Water tightness

The KFC has remarkably high watertightness with a newly developed accordion-type elastic strip seal and the laminated structure of dust-proof material prevents noise transmission through the joint.

Structure & Standard Dimensions

» Standard Cross-Section



» Dimensions

(Unit:mm)

Type	Movement Range	A	B	C	D	E	F
KFC-120	120(± 60)	715	355	155	480	160	190
KFC-190	190(± 95)	860	500	260	580	165	195
KFC-250	250(± 125)	990	610	350	625	170	200
KFC-260	260(± 130)	1005	625	365	645	170	200

- 1) All the dimensions for applications at a normal temperature.
- 2) The value of "F" for a mortar thickness of 30mm.

Material properties

» Nodular Graphite Cast Iron

Standard	Material symbol
JIS G 5502	FCD400-15

» Mechanical Property

Tensile Test		(For Reference)	
Tensile Strength (N/mm ²)	Elongation (%)	Hardness (HB)	Main Base Organization
400 or more	15 or more	130 - 180	Ferrite

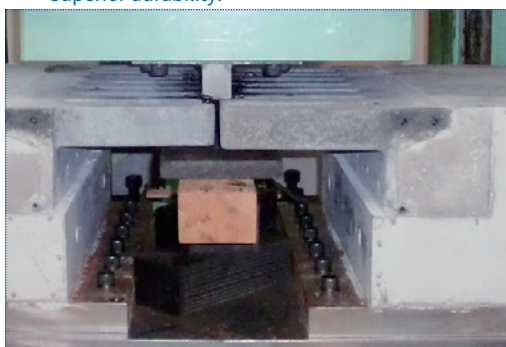
» Chemical Component

C	S	Mg
2.5% or less	0.02% or less	0.09% or less

Performance Test

» Two-Million Cycle Loading Test

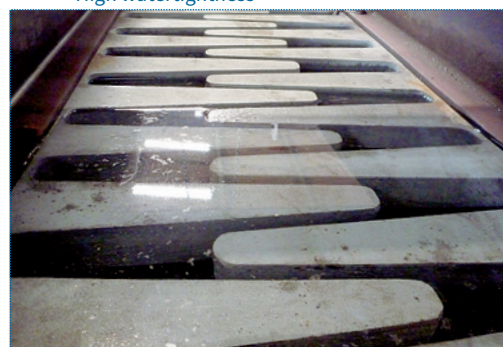
*Superior durability.



Durability Test

» Watertightness Test

*High watertightness



Leak Test by Filling Water


Kawakin Core-Tech Co., Ltd.

Head Office : 2-2-7, Kawaguchi, Kawaguchi-city, Saitama, 332-0015, JAPAN

TEL: +81-48-259-1117 FAX: +81-48-259-1137

Email: info@kawakinkk.co.jp

Branch/Plant : Ibaraki / Tokyo / Osaka / Sendai / Sapporo / Vietnam

Tomorrow's Technology, Today.

Kawakin Holdings Group

Issued 06/2022

www.kawakinct.co.jp